

McKenzie County

Emergency Management

Severe Winter Weather Safety

Supplies

Primary concerns are loss of heat, power and telephone service and a shortage of supplies if storm conditions continue for more than a day.

Have available:

- Flashlight & extra batteries
- Battery-powered NOAA weather radio and portable radio to receive emergency information. These may be your only links to the outside.
- Extra food & water. Have high energy food, such as dried fruit, nuts & granola bars, and food requiring no cooking or refrigeration.
- Extra medicine and baby items
- First-aid supplies
- Heating fuel. Refuel before you are empty. Fuel carriers may not reach you for days after a winter storm.
- Emergency heat source (fireplace, wood stove, space heater). Use properly to prevent a fire and ventilate.
- Fire extinguisher and smoke alarm. Test smoke alarms at least once a month to ensure they work properly.

Stay Tuned for Storm Warnings.

Listen to your local radio and TV station for weather updates. You can also purchase a NOAA weather radio in most electronic departments.

Travel

Fully check and winterize your vehicle before the winter season begins.

Plan your travel and check the latest weather reports to avoid the storm!

Carry a WINTER STORM SURVIVAL KIT:

- Mobile phone, charger, batteries
- Blankets/sleeping bags
- Flashlight & batteries
- First-aid kit
- Knife
- High-calorie, non-perishable food
- Extra clothing
- Large empty can for emergency toilet, tissues and paper towels for sanitary purposes.
- Small can and waterproof matches to melt snow for drinking water.
- Sack of sand or cat litter for traction
- Shovel
- Windshield scraper and brush
- Tool kit
- Tow rope
- Battery booster cables
- Water container
- Compass & road maps

Keep your gas tank near full to avoid ice in the tank and fuel lines.

Avoid traveling alone. Let someone know your timetable and primary & alternate routes.

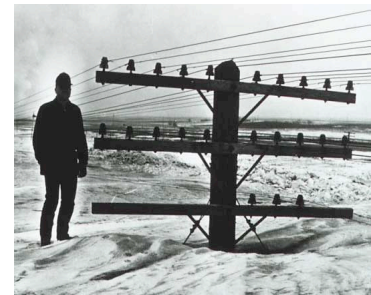
Animal Care

Move animals to sheltered areas. Shelter belts, properly laid out and oriented, are better protection for cattle than confining shelters, such as sheds.

Haul extra feed to nearby feeding areas.

Have water available. Many animals die from dehydration in winter storms.

Make sure pets have plenty of food, water and shelter.



North Dakota March 1966

What to Listen For.....

The NWS issues outlooks, watches, warnings and advisories for all winter weather hazards.

Advisory: Winter weather conditions are expected to cause significant inconveniences & may be hazardous. Be sure to monitor conditions.

Watch: Winter storm conditions are possible in next 36-48 hours. Prepare!

Warning: Life-threatening severe winter conditions have begun or will begin within 24 hours. Act now!